

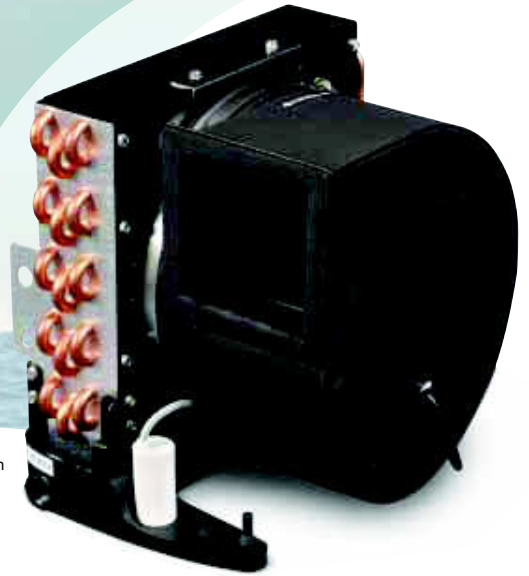
NEW!

Emerald TurboVap DX Series

Reduced Size, Noise & Amperage



TVE12-230V shown



The Emerald TurboVap series of split-system evaporators incorporates revolutionary design features with mechanical engineering that maximizes the effectiveness of R-410A, an environmentally safe refrigerant.

Emerald TurboVaps are easy to install. For ideal positioning, the high-velocity blower can rotate up to 270 degrees with a single adjustment screw. The enclosed motor means no blower-motor overhang for a compact design.

Since evaporators are usually positioned in or near cabins, noise is always a concern. The Emerald TurboVap uses a vibration-isolation mounting system to minimize noise, so the evaporator runs more quietly. The fully insulated, high-velocity blowers are quiet and efficient.

Excellent condensate drainage is achieved with a unique positive-flow, anti-slosh, composite drain pan that is rust-free. Condensate water is rapidly removed at one of two easy-to-plumb drain locations.

The Emerald TurboVap Series was designed to operate as a system with the Emerald Condenser Series. Both of these split-system components were engineered to harness and maximize the superior thermodynamic properties of the environmentally safe R-410A refrigerant.

The Emerald TurboVap is available in six capacities ranging from 4,000 to 16,000 BTU/hr.

Rust-free molded composite drain pan reduces standing water – 2 oz. (59 ml) vs. 16 oz. (473 ml) in ordinary pans. Innovatively engineered “positive flow” drain channels prevent the sloshing and spilling of condensate — even in the roughest seas.



Key Benefits

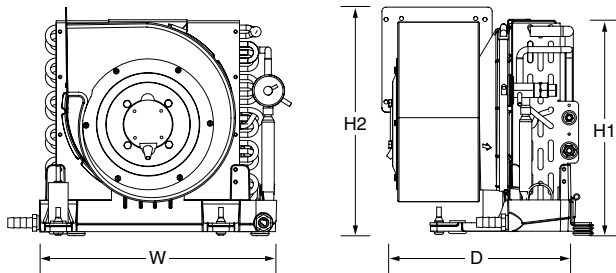
- Up to 28% reduced amperage.
- Up to 85% reduction of standing water in the drain pan.
- Up to 14% increase in cooling capacity.
- Up to 15% reduced weight.
- Up to 17% reduction in height.
- Up to 19% increased air flow CFM.
- Positive-flow, anti-slosh, rust-free drain pan ensures condensate does not spill.
- Installation time reduced by 15 minutes.
- Single screw for 270° blower rotation.
- No blower-motor overhang reduces depth.
- Vibration-isolation mounting system reduces noise.
- Pair it with an Emerald Condenser for maximum performance.
- Available in 4K, 6K, 8K, 10K, 12K, and 16K BTU/hr capacities.
- 115V or 230V models.
- Engineered to maximize thermodynamic properties of R-410A, an environmentally safe refrigerant.

Technical Specifications for Emerald TurboVap DX Evaporators

| Model ⁽¹⁾ | TVE4 | | TVE6 | | TVE8 | | TVE10 | | TVE12 | | TVE16 | |
|---|----------|------|----------|------|-----------|------|-----------|------|-----------|------|-----------|------|
| Capacity BTU/hr | 4,000 | | 6,000 | | 8,000 | | 10,000 | | 12,000 | | 16,000 | |
| Voltage (VAC) @ 50-60Hz/1 Ph | 115 | 230 | 115 | 230 | 115 | 230 | 115 | 230 | 115 | 230 | 115 | 230 |
| Full Load Amps Blower (FLA) | 0.8 | 0.41 | 0.8 | 0.41 | 1.56 | 0.83 | 1.14 | 0.61 | 1.14 | 0.61 | 1.61 | 0.78 |
| K.V.A. (Kilo-Volt-Amps) | 0.09 | 0.09 | 0.09 | 0.09 | 0.18 | 0.19 | 0.13 | 0.14 | 0.13 | 0.14 | 0.19 | 0.18 |
| Suggested Circuit Breaker (Amps) | 2.0 | 1.0 | 2.0 | 1.0 | 4.0 | 2.0 | 3.0 | 1.0 | 3.0 | 1.0 | 4.0 | 2.0 |
| Unit Dimensions (in/mm) | | | | | | | | | | | | |
| Height – Evaporator (H1) | 10.8/274 | | 10.8/274 | | 10.8/274 | | 12.6/320 | | 12.6/320 | | 13.0/330 | |
| Height – Blower (H2) ⁽²⁾ | 10.2/259 | | 10.2/259 | | 11.4/290 | | 12.4/315 | | 12.4/315 | | 13.6/345 | |
| Width | 12.3/312 | | 12.3/312 | | 12.3/312 | | 14.3/363 | | 14.3/363 | | 14.3/363 | |
| Depth | 9.5/241 | | 9.5/241 | | 9.4/239 | | 10.4/264 | | 10.4/264 | | 11.6/295 | |
| Min. Duct Size Ø | 4.0/102 | | 4.0/102 | | 5.0/127 | | 6.0/152 | | 6.0/152 | | 7.0/178 | |
| Min. Supply Air Grille (sq. in./cm.) | 32/206 | | 32/206 | | 48/310 | | 60/387 | | 70/452 | | 81/523 | |
| Min. Return Air Grille (sq. in./cm.) | 64/413 | | 64/413 | | 80/516 | | 110/710 | | 130/839 | | 160/1032 | |
| Net Weight (lbs./kg.) | 10.5/4.8 | | 11.0/5.0 | | 14.0/6.4 | | 17.5/7.9 | | 17.5/7.9 | | 20.5/9.3 | |
| Gross Weight (lbs./kg.) | 18.5/8.4 | | 19.0/8.6 | | 22.0/10.0 | | 25.5/11.6 | | 25.5/11.6 | | 28.5/12.9 | |

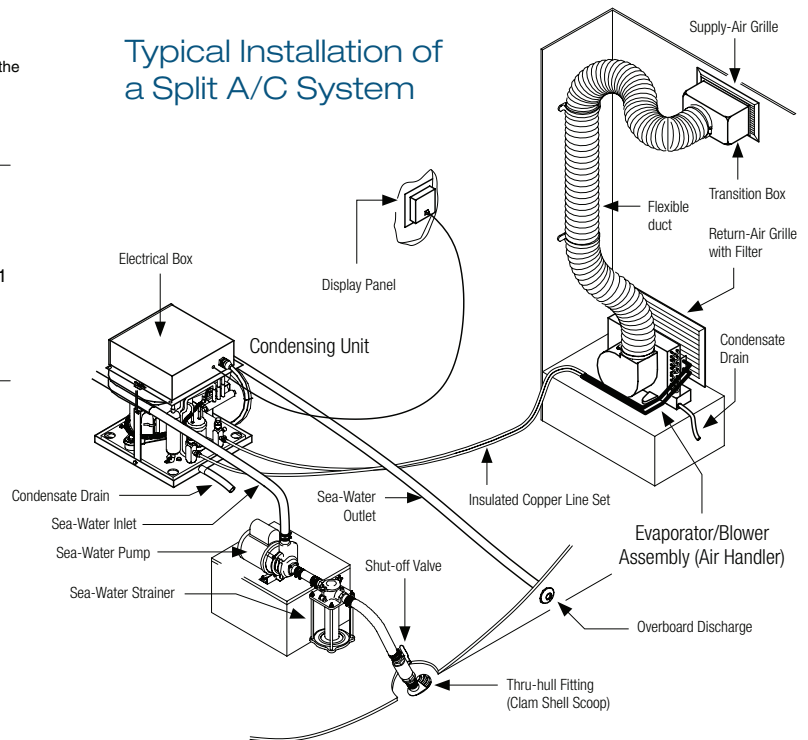
Notes:

- ⁽¹⁾ End all model numbers with a '115V' or '230V' depending on the selected voltage.
- ⁽²⁾ Add 2.0"/51mm to the height dimension to allow for the duct ring (not included) when the blower is installed in the vertical position.



Emerald 12K unit shown with optional lineset extensions.

Typical Installation of a Split A/C System



DOMETIC MARINE

2000 N. Andrews Ave. Ext. I Pompano Beach, FL 33069 USA | 954-973-2477 | Fax 954-979-4414
www.DometicUSA.com | MarineSales@DometicUSA.com

United States & Canada Tech Support

8:00 AM to 5:00 PM Eastern Time: 800-542-2477
After hours and weekends: 888-440-4494

International Sales & Service:

Europe & the Middle East: Call +44(0)870-330-6101
For all other areas visit our website to find your nearest distributor.

Dealer:

